

Local Market Update – April 2016

A RESEARCH TOOL PROVIDED BY THE INDIANA ASSOCIATION OF REALTORS®



Shelby County

- 17.4%

+ 23.7%

+ 22.3%

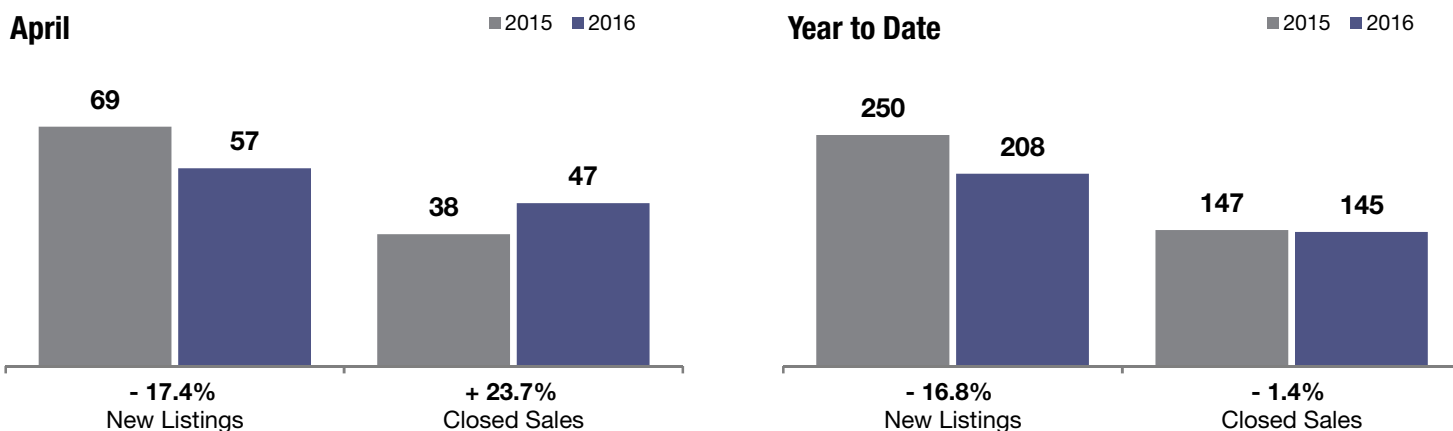
Change in
New Listings

Change in
Closed Sales

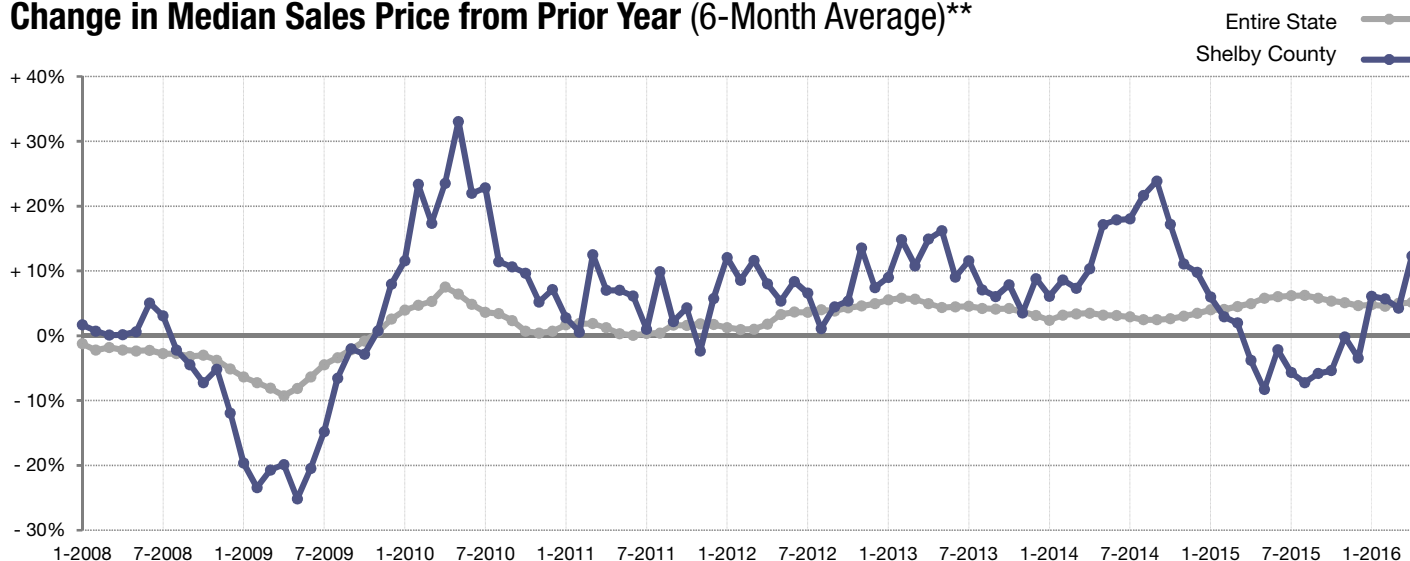
Change in
Median Sales Price

| | April | | | Year to Date | | |
|--|----------|-----------|---------|--------------|-----------|---------|
| | 2015 | 2016 | + / - | 2015 | 2016 | + / - |
| New Listings | 69 | 57 | - 17.4% | 250 | 208 | - 16.8% |
| Closed Sales | 38 | 47 | + 23.7% | 147 | 145 | - 1.4% |
| Median Sales Price | \$91,000 | \$111,250 | + 22.3% | \$95,500 | \$112,500 | + 17.8% |
| Percent of Original List Price Received at Sale* | 87.8% | 91.5% | + 4.3% | 89.9% | 90.0% | + 0.1% |
| Months Supply of Inventory | 5.9 | 5.0 | - 16.4% | -- | -- | -- |
| Inventory of Homes for Sale | 238 | 210 | - 11.8% | -- | -- | -- |

* Does not account for list price from any previous listing contracts. | Activity for one month can sometimes look extreme due to small sample size.



Change in Median Sales Price from Prior Year (6-Month Average)**



** Each dot represents the change in median sales price from the prior year using a 6-month weighted average. This means that each of the 6 months used in a dot are proportioned according to their share of sales during that period. | Data obtained from participating Multiple Listing Services (MLSs) and Broker Listing Cooperatives® (BLCs®).
Powered by ShowingTime 10K.